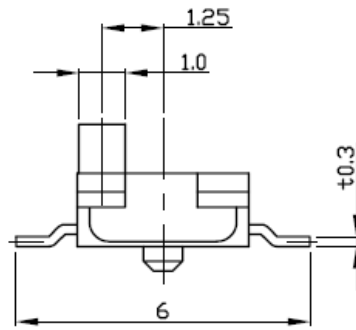
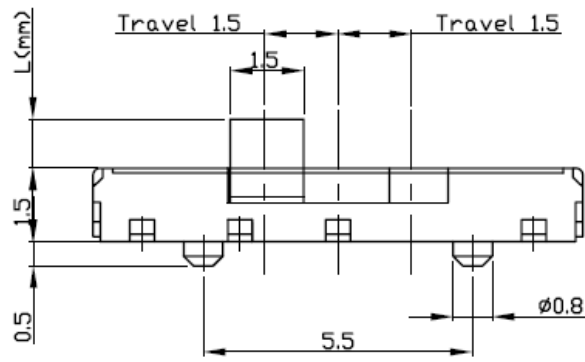
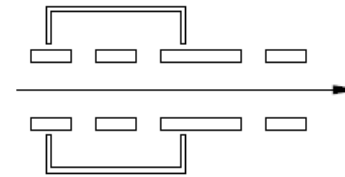


# DIMENSIONS



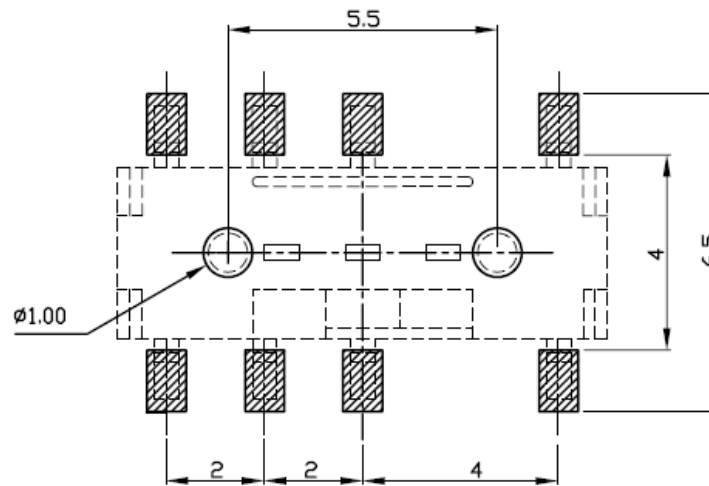
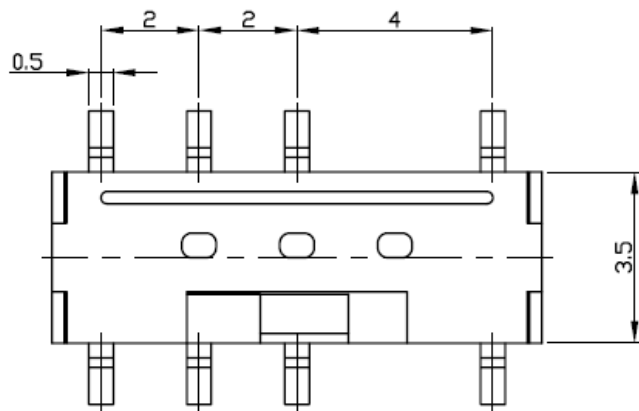
# CIRCUIT DIAGRAM



L	mm
-	1.0
A	2.0
B	1.5

## P.C.B MOUNTING PATTERN DIMENSION

The following soldering patterns are recommended for reflow soldering



## SPECIFICATION

1. RATING : 0.3A 4V DC
2. CIRCUIT : 2C - 3P
3. TIMING : NON SHORTING
4. TRAVEL : 1.5 mm
5. OPERATING FORCE : 200±150gf

